

1. THIS DRAWING SHALL BE READ IN CONJUNCTION WITH ALL RELEVANT ARCHITECTURAL, STRUCTURAL AND OTHER SERVICES DRAWINGS.
2. ANY DISCREPANCY NOTICED SHALL BE BROUGHT TO THE ATTENTION OF THE CONSULTANTS AND RESOLVED PRIOR TO PROCUREMENT / EXECUTION OF WORKS.
3. ALL DIMENSIONS ARE IN MILLIMETERS AND ALL LEVELS ARE IN METERS UNLESS OTHERWISE INDICATED.
4. FOLLOW WRITTEN DIMENSIONS ONLY, DO NOT SCALE THE DRAWING.

SL. NO.	UPS POWER SOCKET SYMBOLS DESCRIPTION	SYMBOL
1	2 NO OF 6/16A 3PIN SWITCHED SOCKET CONTROLLED BY 1 NOS OF 20A SWITCH (WITHOUT BOX ON FURNITURE)	
2	1 NO OF 6A 3PIN SWITCHED SOCKET CONTROLLED BY 1 NOS OF 10A SWITCH (WITH BOX)	
3	2 NO OF 6A 3PIN SWITCHED SOCKET CONTROLLED BY 1 NOS OF 10A SWITCH (WITH BOX)	
4	1 NO OF 6/16A 3PIN SWITCHED SOCKET CONTROLLED BY 1 NOS OF 20A SWITCH (WITH BOX)	

REV. NO.	REVISION DESCRIPTION	DATE
R0	ISSUED FOR TENDER	11.02.2025
R1		
R2		
R3		
R4		
R5		
R6		

JSW ACADEMIC BLOCK - NLSIU
NEW ACADEMIC BLOCK Gnanabharathi
Main Rd, Teachers Colony, Naagarabhaavi,
Bengaluru, Karnataka 560072

**NATIONAL LAW SCHOOL OF
INDIA UNIVERSITY**
Gnana Bharathi Main Rd, Teachers
Colony, Naagarabhaavi, Bengaluru,
Karnataka 560072

HUNDREDHANDS
9/2, Madras Bank Road,
Shanthala Nagar, Ashok Nagar, Bengaluru,
Karnataka 560001

LEAD
Eco Friendly Solutions

**LEAD CONSULTANCY & ENGINEERING
SERVICES (INDIA) Pvt.Ltd.**

No.2729, 1st, FLOOR, 80 FEET ROAD
INDIRA NAGAR 3rd STAGE, BENGALURU-560038, KARNATAKA.

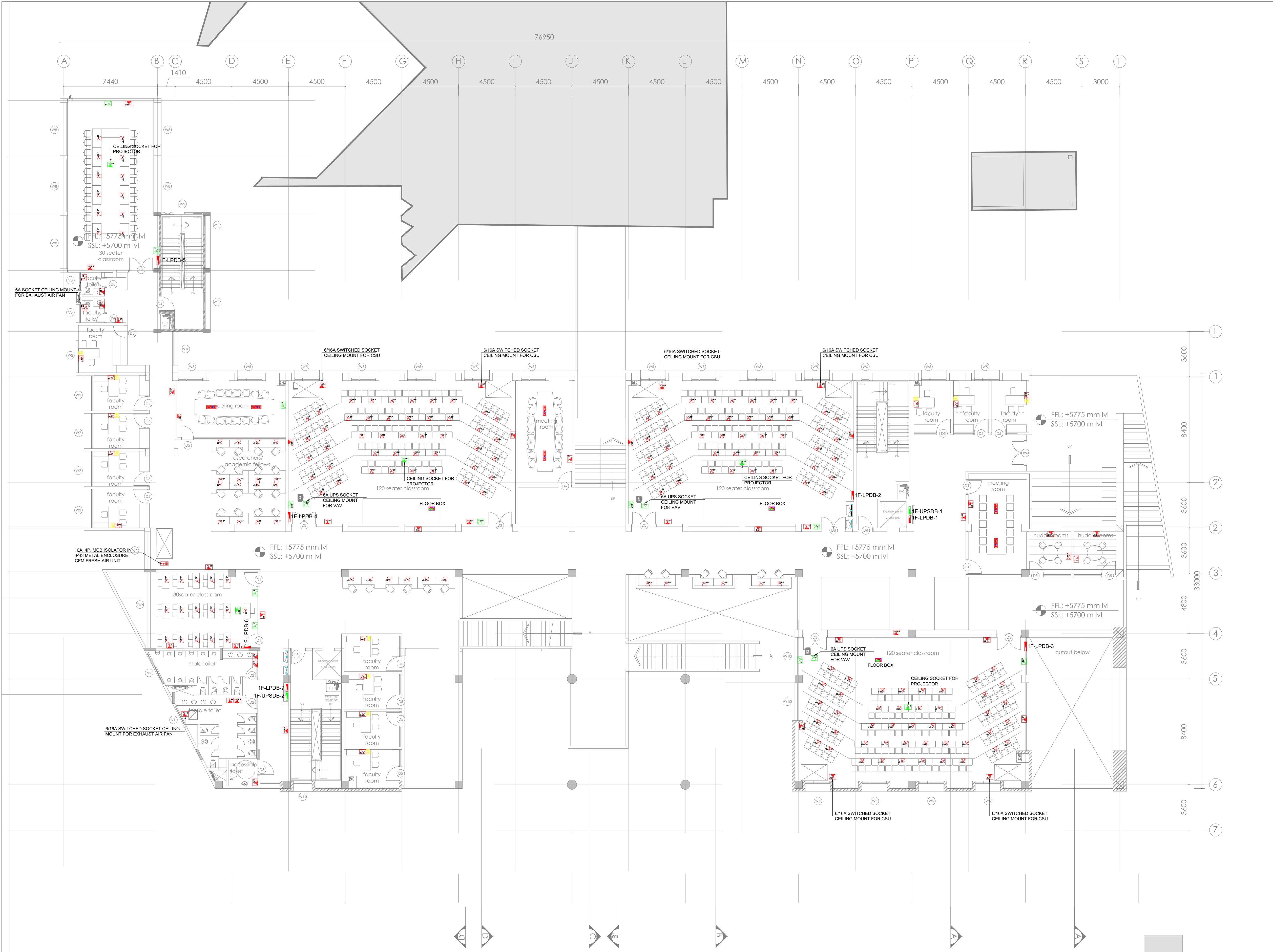
Phone: +91 80 42980111, Web: lcsind.org
A/c: Bengaluru | Mumbai | Pune | Gurgaon | Chennai | Hyderabad | Kolkata

BASEMENT POWER & CABLE TRAY LAYOUT

DRAWN BY	HMD	DRAWING NUMBER LCES-NLS-E-201	SCALE	1:150
CHECKED	SSK		SHEET SIZE	A1
APPROVED	PD	REV - R0	DATE	11.02.2025

TENDER

C THIS DRAWING IS SOLE PROPERTY OF **LEAD CONSULTANCY**
USE OF THIS DRAWING FOR ANY PURPOSE OTHER THAN THAT
MENTIONED TO BE DONE ONLY AFTER THEIR PRIOR APPROVAL.



- GENERAL NOTES:**
- THIS DRAWING SHALL BE READ IN CONJUNCTION WITH ALL RELEVANT ARCHITECTURAL, STRUCTURAL AND OTHER SERVICES DRAWINGS.
 - ANY DISCREPANCY NOTICED SHALL BE BROUGHT TO THE ATTENTION OF THE CONSULTANTS AND RESOLVED PRIOR TO PROCUREMENT / EXECUTION OF WORKS.
 - ALL DIMENSIONS ARE IN MILLIMETERS AND ALL LEVELS ARE IN METERS UNLESS OTHERWISE INDICATED.
 - FOLLOW WRITTEN DIMENSIONS ONLY, DO NOT SCALE THE DRAWING.

SL. NO.	RAW POWER SOCKET SYMBOLS DESCRIPTION	SYMBOL
1	1 NO OF 6A 3PIN SWITCHED SOCKET CONTROLLED BY 1 NOS OF 10A SWITCH (WITHOUT BOX ON FURNITURE)	2P
2	1 NO OF 6A 3PIN SWITCHED SOCKET CONTROLLED BY 1 NOS OF 10A SWITCH (WITHOUT BOX ON FURNITURE)	2P
3	1 NO OF 6A 3PIN SWITCHED SOCKET CONTROLLED BY 1 NOS OF 10A SWITCH (WITH BOX)	2P
4	1 NO OF 6A 3PIN SWITCHED SOCKET CONTROLLED BY 1 NOS OF 10A SWITCH (WITH BOX)	2P
5	1 NO OF 6A 3PIN SWITCHED SOCKET CONTROLLED BY 1 NOS OF 10A SWITCH (WITH BOX)	2P
6	1 NO OF 6A 3PIN SWITCHED SOCKET CONTROLLED BY 1 NOS OF 10A SWITCH (WITH BOX)	2P
7	TELEPHONE	TE
8	DATA PORT	DP
9	2 SET OF 6/16A INTEL SOCKET CONTROLLED BY 16A SWITCH IN 2 ROWS ON RAW POWER OTHER ON UPS - 2 DATA PORTS WITH HDMI PROVISION	2P
10	1 NO OF 6/16A 3PIN SWITCHED SOCKET CONTROLLED BY 1 NOS OF 20A SWITCH + 2 DATA+HDMI PORTS (UPS NETBOX TYPE)	2P
11	2P MCB IN IP-40 POLY CARBONATE ENCLOSURE	2P
12	4P MCB IN IP-40 POLY CARBONATE ENCLOSURE	4P
13	4P MCB IN IP-55 MS ENCLOSURE	4P

SL. NO.	UPS POWER SOCKET SYMBOLS DESCRIPTION	SYMBOL
1	1 NO OF 6/16A 3PIN SWITCHED SOCKET CONTROLLED BY 1 NOS OF 20A SWITCH (WITHOUT BOX ON FURNITURE)	2P
2	1 NO OF 6A 3PIN SWITCHED SOCKET CONTROLLED BY 1 NOS OF 10A SWITCH (WITH BOX)	2P
3	2 NO OF 6A 3PIN SWITCHED SOCKET CONTROLLED BY 1 NOS OF 10A SWITCH (WITH BOX)	2P
4	1 NO OF 6/16A 3PIN SWITCHED SOCKET CONTROLLED BY 1 NOS OF 20A SWITCH (WITH BOX)	2P

SYMBOL	DESCRIPTION
50(W) x 50(mm) PERFORATED TYPE CABLE TRAY	
100(W) x 50(mm) PERFORATED TYPE CABLE TRAY	
150(W) x 50(mm) PERFORATED TYPE CABLE TRAY	
150(W) x 50(mm) LADDER TYPE CABLE TRAY	
300(W) x 50(mm) LADDER TYPE CABLE TRAY	
400(W) x 50(mm) (H) LADDER TYPE CABLE TRAY	
600(W) x 50(mm) (H) LADDER TYPE CABLE TRAY	
800(W) x 50(mm) (H) PERFORATED TYPE CABLE TRAY	
750(W) x 75(W) (H) LADDER TYPE CABLE TRAY	
1000(W) x 75(W) (H) LADDER TYPE CABLE TRAY	

REV. NO.	REVISION DESCRIPTION	DATE
R0	ISSUED FOR TENDER	11.02.2025
R1		
R2		
R3		
R4		
R5		
R6		

PROJECT

JSW ACADEMIC BLOCK - NLSIU
NEW ACADEMIC BLOCK Gnanabharathi Main Rd, Teachers Colony, Naagarabhaavi, Bengaluru, Karnataka 560072

CLIENT

NATIONAL LAW SCHOOL OF INDIA UNIVERSITY
Gnanabharathi Main Rd, Teachers Colony, Naagarabhaavi, Bengaluru, Karnataka 560072

ARCHITECT

HUNDREDDHANDS
9/2, Madras Bank Road, Shanthala Nagar, Ashok Nagar, Bengaluru, Karnataka 560001

MEPF AND IBMS CONSULTANTS

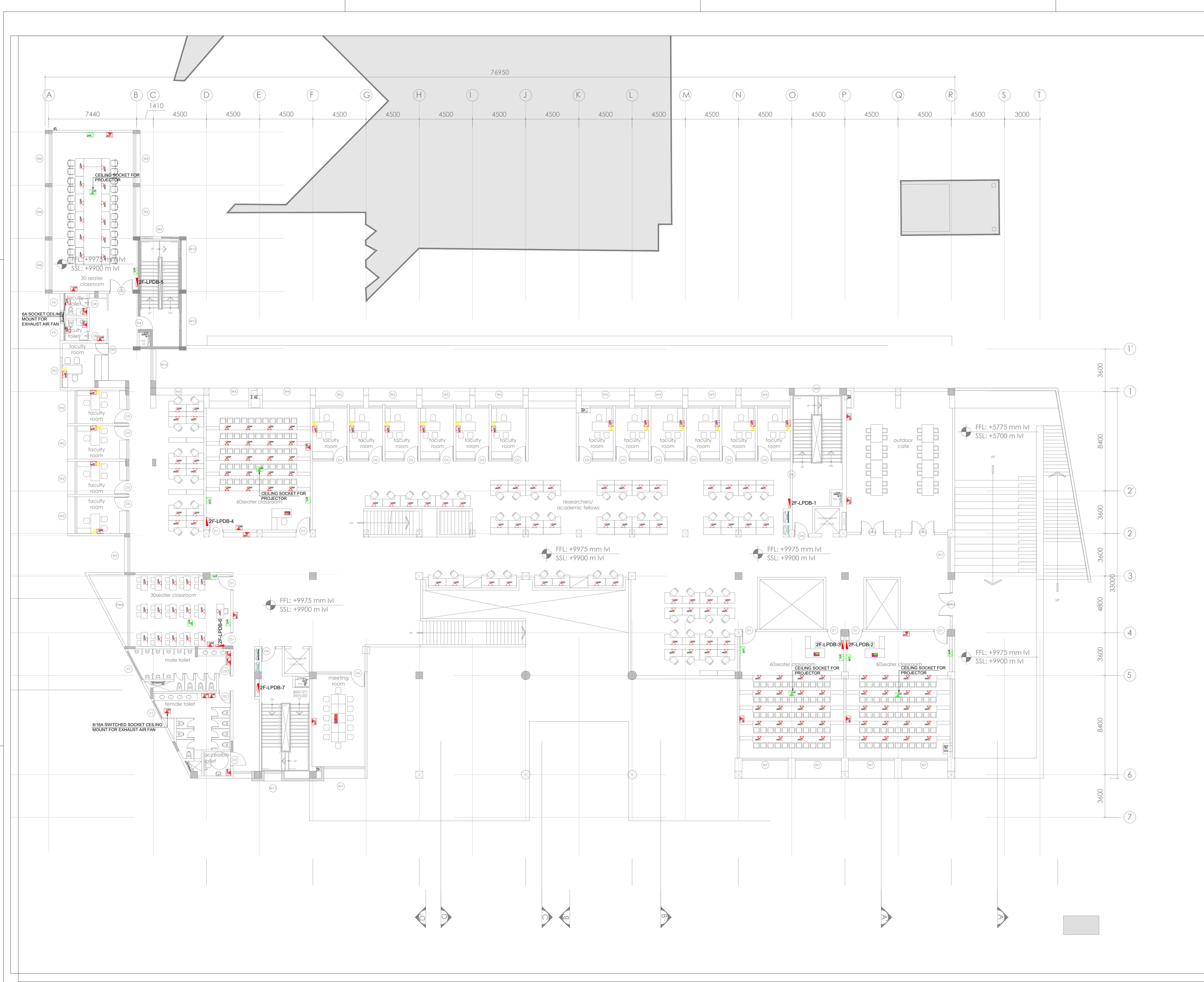
LEAD CONSULTANCY & ENGINEERING SERVICES (INDIA) Pvt.Ltd.
No.272/ 1st FLOOR, 80 FEET ROAD, INDRA NAGAR B STAGE, BENGALURU-560038, KARNATAKA.
Phone: +91 80 42980111, Web: lcsindia.org
India: Bengaluru | Mumbai | Pune | Gurgaon | Chennai | Hyderabad | Kolkata

DRAWING TITLE			
1F POWER & CABLE TRAY LAYOUT			
DRAWN BY	HMD	DRAWING NUMBER	LCES-NLS-E-203
CHECKED	SSK	SCALE	1:150
APPROVED	PD	SHEET SIZE	A1
		DATE	11.02.2025

DRAWING ISSUED FOR

TENDER

THIS DRAWING IS SOLE PROPERTY OF **LEAD CONSULTANCY**
USE OF THIS DRAWING FOR ANY PURPOSE OTHER THAN THAT MENTIONED TO BE DONE ONLY AFTER THEIR PRIOR APPROVAL.



- GENERAL NOTES:**
- THIS DRAWING SHALL BE READ IN CONJUNCTION WITH ALL RELEVANT ARCHITECTURAL, STRUCTURAL AND OTHER SERVICES DRAWINGS.
 - ANY DISCREPANCY NOTICED SHALL BE BROUGHT TO THE ATTENTION OF THE CONSULTANTS AND RESOLVED PRIOR TO PROCUREMENT / EXECUTION OF WORKS.
 - ALL DIMENSIONS ARE IN MILLIMETERS AND ALL LEVELS ARE IN METERS UNLESS OTHERWISE INDICATED.
 - FOLLOW WRITTEN DIMENSIONS ONLY, DO NOT SCALE THE DRAWING.

SL. NO.	RAW POWER SOCKET SYMBOLS DESCRIPTION	SYMBOL
1	1 NO OF 16A 3PIN SWITCHED SOCKET CONTROLLED BY 1 NOS OF 16A SWITCH (WITHOUT BOX ON FURNITURE)	2P
2	1 NO OF 16A 3PIN SWITCHED SOCKET CONTROLLED BY 1 NOS OF 16A SWITCH (WITH BOX)	2P
3	1 NO OF 16A 3PIN SWITCHED SOCKET CONTROLLED BY 1 NOS OF 16A SWITCH (WITH BOX)	2P
4	1 NO OF 16A 3PIN SWITCHED SOCKET CONTROLLED BY 1 NOS OF 16A SWITCH (WITH BOX)	2P
5	1 NO OF 16A 3PIN SWITCHED SOCKET CONTROLLED BY 1 NOS OF 16A SWITCH (WITH BOX)	2P
6	1 NO OF 16A 3PIN SWITCHED SOCKET CONTROLLED BY 1 NOS OF 16A SWITCH (WITH BOX)	2P
7	TELEPHONE	TEL
8	DATA POINT	DP
9	2 SET OF 8/16A INTEL SOCKET CONTROLLED BY 16A SWITCH IN 2 ROWS ON RAW POWER OTHER ON UPS - 2 DATA PORTS WITH HDMI PROVISION	2P
10	1 NO OF 8/16A 3PIN SWITCHED SOCKET CONTROLLED BY 1 NOS OF 20A SWITCH + 2 DATA+HDMI PORTS (UPS NETWORK TYPE)	2P
11	3P MCB IN IP-40 POLY CARBONATE ENCLOSURE	3P
12	4P MCB IN IP-40 POLY CARBONATE ENCLOSURE	4P
13	4P MCB IN IP-55 MS ENCLOSURE	4P

SL. NO.	UPS POWER SOCKET SYMBOLS DESCRIPTION	SYMBOL
1	2 NO OF 8/16A 3PIN SWITCHED SOCKET CONTROLLED BY 1 NOS OF 20A SWITCH (WITHOUT BOX ON FURNITURE)	2P
2	1 NO OF 6A 3PIN SWITCHED SOCKET CONTROLLED BY 1 NOS OF 16A SWITCH (WITH BOX)	2P
3	2 NO OF 6A 3PIN SWITCHED SOCKET CONTROLLED BY 1 NOS OF 16A SWITCH (WITH BOX)	2P
4	1 NO OF 8/16A 3PIN SWITCHED SOCKET CONTROLLED BY 1 NOS OF 20A SWITCH (WITH BOX)	2P

SYMBOL	DESCRIPTION
50(W) x 50mm(H) PERFORATED TYPE CABLE TRAY	
100(W) x 50mm(H) PERFORATED TYPE CABLE TRAY	
150(W) x 50mm(H) PERFORATED TYPE CABLE TRAY	
150(W) x 50mm(H) LADDER TYPE CABLE TRAY	
300(W) x 50mm(H) LADDER TYPE CABLE TRAY	
400mm (W) x 50mm (H) LADDER TYPE CABLE TRAY	
600mm (W) x 50mm (H) LADDER TYPE CABLE TRAY	
800mm (W) x 50mm (H) PERFORATED TYPE CABLE TRAY	
750mm (W) x 75mm (H) LADDER TYPE CABLE TRAY	
100mm (W) x 75mm (H) LADDER TYPE CABLE TRAY	

REV. NO.	REVISION DESCRIPTION	DATE
R0	ISSUED FOR TENDER	11.02.2025
R1		
R2		
R3		
R4		
R5		
R6		

PROJECT

JSW ACADEMIC BLOCK - NLSIU
NEW ACADEMIC BLOCK Gnana Bharathi Main Rd, Teachers Colony, Naagarabhaavi, Bengaluru, Karnataka 560072

CLIENT

NATIONAL LAW SCHOOL OF INDIA UNIVERSITY
Gnana Bharathi Main Rd, Teachers Colony, Naagarabhaavi, Bengaluru, Karnataka 560072

ARCHITECT

HUNDREDHANDS
7/2, Madras Bank Road, Shanthala Nagar, Ashok Nagar, Bengaluru, Karnataka 560001

MEPF AND IBMS CONSULTANTS

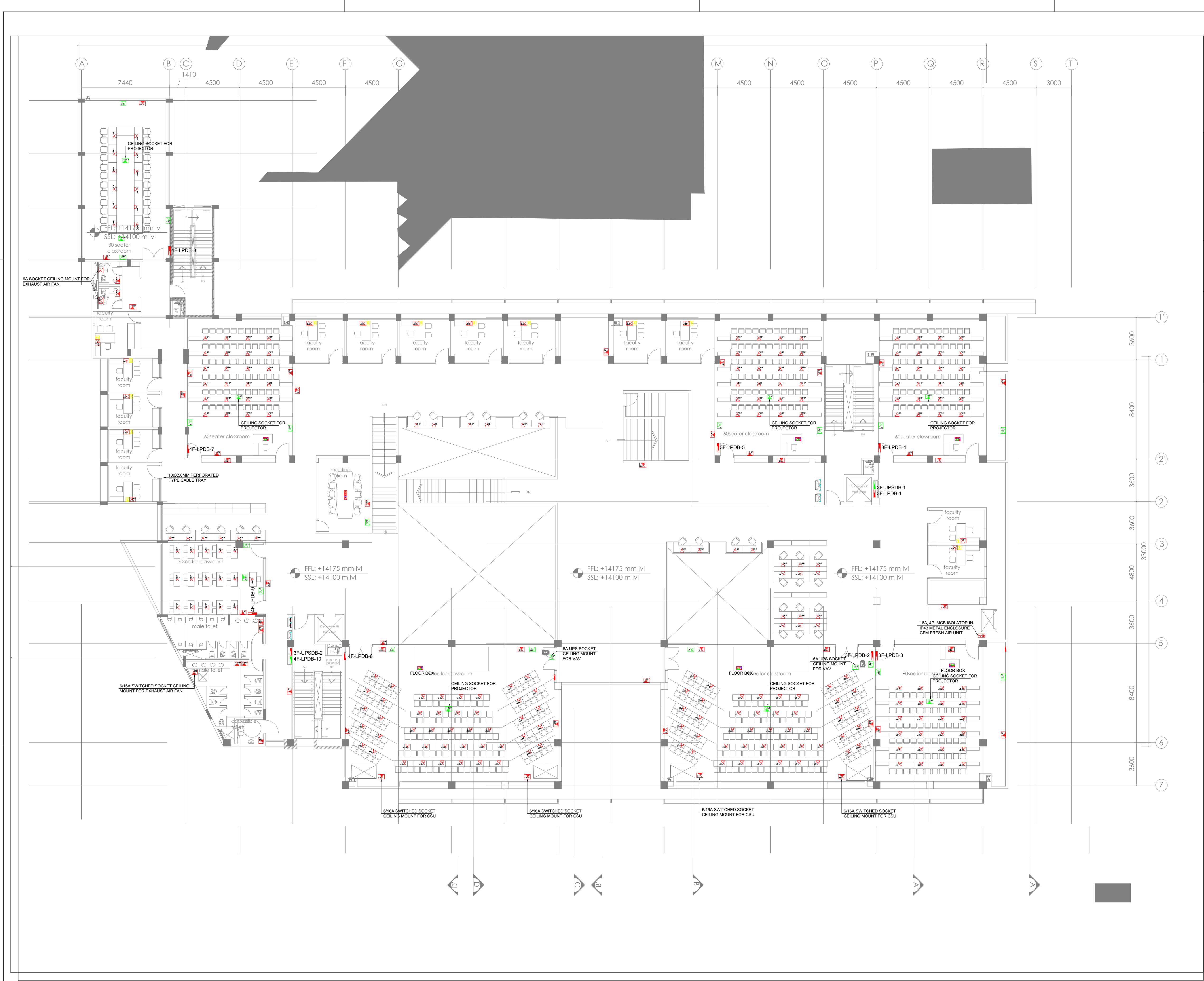
LEAD CONSULTANCY & ENGINEERING SERVICES (INDIA) Pvt.Ltd.
No.2729, 1st FLOOR, 80 FEET ROAD, HOORANAGAR STAGE, BENGALURU-560038, KARNATAKA.
Phone: +91 80 42980111, Web: lcsindia.org
India: Bengaluru | Mumbai | Pune | Gurgaon | Chennai | Hyderabad | Kolkata

DRAWING TITLE			
2F POWER & CABLE TRAY LAYOUT			
DRAWN BY	HMD	DRAWING NUMBER	LCES-NLS-E-204
CHECKED	SSK	SCALE	1:150
APPROVED	PD	SHEET SIZE	A1
		DATE	11.02.2025

DRAWING ISSUED FOR

TENDER

THIS DRAWING IS SOLE PROPERTY OF **LEAD CONSULTANCY**
USE OF THIS DRAWING FOR ANY PURPOSE OTHER THAN THAT MENTIONED TO BE DONE ONLY AFTER THEIR PRIOR APPROVAL.



- GENERAL NOTES:**
1. THIS DRAWING SHALL BE READ IN CONJUNCTION WITH ALL RELEVANT ARCHITECTURAL, STRUCTURAL AND OTHER SERVICES DRAWINGS.
 2. ANY DISCREPANCY NOTICED SHALL BE BROUGHT TO THE ATTENTION OF THE CONSULTANTS AND RESOLVED PRIOR TO PROCUREMENT / EXECUTION OF WORKS.
 3. ALL DIMENSIONS ARE IN MILLIMETERS AND ALL LEVELS ARE IN METERS UNLESS OTHERWISE INDICATED.
 4. FOLLOW WRITTEN DIMENSIONS ONLY, DO NOT SCALE THE DRAWING.

SL. NO.	RAW POWER SOCKET SYMBOLS DESCRIPTION	SYMBOL
1	1 NO OF 16A 3PIN SWITCHED SOCKET CONTROLLED BY 1 NOS OF 16A SWITCH (WITHOUT BOX ON FURNITURE)	2P
2	1 NO OF 16A 3PIN SWITCHED SOCKET CONTROLLED BY 1 NOS OF 16A SWITCH (WITHOUT BOX ON FURNITURE)	2P
3	1 NO OF 16A 3PIN SWITCHED SOCKET CONTROLLED BY 1 NOS OF 16A SWITCH (WITH BOX)	2P
4	1 NO OF 16A 3PIN SWITCHED SOCKET CONTROLLED BY 1 NOS OF 16A SWITCH (WITH BOX)	2P
5	1 NO OF 16A 3PIN SWITCHED SOCKET CONTROLLED BY 1 NOS OF 16A SWITCH (WITH BOX)	2P
6	1 NO OF 16A 3PIN SWITCHED SOCKET CONTROLLED BY 1 NOS OF 16A SWITCH (WITH BOX)	2P
7	TELEPHONE	TEL
8	DATA POINT	DP
9	2 SET OF 6/16A 3PIN SWITCHED SOCKET CONTROLLED BY 1 NOS OF 16A SWITCH IN 2 ROWS ON RAW POWER OTHER ON UPS + 2 DATA PORTS WITH HDMI PROVISION	2P
10	1 NO OF 6/16A 3PIN SWITCHED SOCKET CONTROLLED BY 1 NOS OF 20A SWITCH + 2 DATA+HDMI PORTS (UPS NETWORK TYPE)	2P
11	3P MCB IN IP-43 POLY CARBONATE ENCLOSURE	3P
12	4P MCB IN IP-43 POLY CARBONATE ENCLOSURE	4P
13	4P MCB IN IP-43 POLY CARBONATE ENCLOSURE	4P

SL. NO.	UPS POWER SOCKET SYMBOLS DESCRIPTION	SYMBOL
1	1 NO OF 6/16A 3PIN SWITCHED SOCKET CONTROLLED BY 1 NOS OF 20A SWITCH (WITHOUT BOX ON FURNITURE)	2P
2	1 NO OF 6A 3PIN SWITCHED SOCKET CONTROLLED BY 1 NOS OF 16A SWITCH (WITH BOX)	2P
3	2 NO OF 6A 3PIN SWITCHED SOCKET CONTROLLED BY 1 NOS OF 16A SWITCH (WITH BOX)	2P
4	1 NO OF 6/16A 3PIN SWITCHED SOCKET CONTROLLED BY 1 NOS OF 20A SWITCH (WITH BOX)	2P

SYMBOL	DESCRIPTION
50(W) x 50mm(H) PERFORATED TYPE CABLE TRAY	
100(W) x 50mm(H) PERFORATED TYPE CABLE TRAY	
150(W) x 50mm(H) PERFORATED TYPE CABLE TRAY	
150(W) x 50mm(H) LADDER TYPE CABLE TRAY	
300(W) x 50mm(H) LADDER TYPE CABLE TRAY	
400mm (W) x 50mm (H) LADDER TYPE CABLE TRAY	
600mm (W) x 50mm (H) LADDER TYPE CABLE TRAY	
600mm (W) x 50mm (H) PERFORATED TYPE CABLE TRAY	
750mm (W) x 75mm (H) LADDER TYPE CABLE TRAY	
1000mm (W) x 75mm (H) LADDER TYPE CABLE TRAY	

REV. NO.	REVISION DESCRIPTION	DATE
R0	ISSUED FOR TENDER	11.02.2025
R1		
R2		
R3		
R4		
R5		
R6		

PROJECT

JSW ACADEMIC BLOCK - NLSIU
NEW ACADEMIC BLOCK Gnanabharathi Main Rd, Teachers Colony, Naagarabhaavi, Bengaluru, Karnataka 560072

CLIENT

NATIONAL LAW SCHOOL OF INDIA UNIVERSITY
Gnanabharathi Main Rd, Teachers Colony, Naagarabhaavi, Bengaluru, Karnataka 560072

ARCHITECT

HUNDREDHANDS
7/2, Madras Bank Road, Shanthala Nagar, Ashok Nagar, Bengaluru, Karnataka 560001

MEPF AND IBMS CONSULTANTS

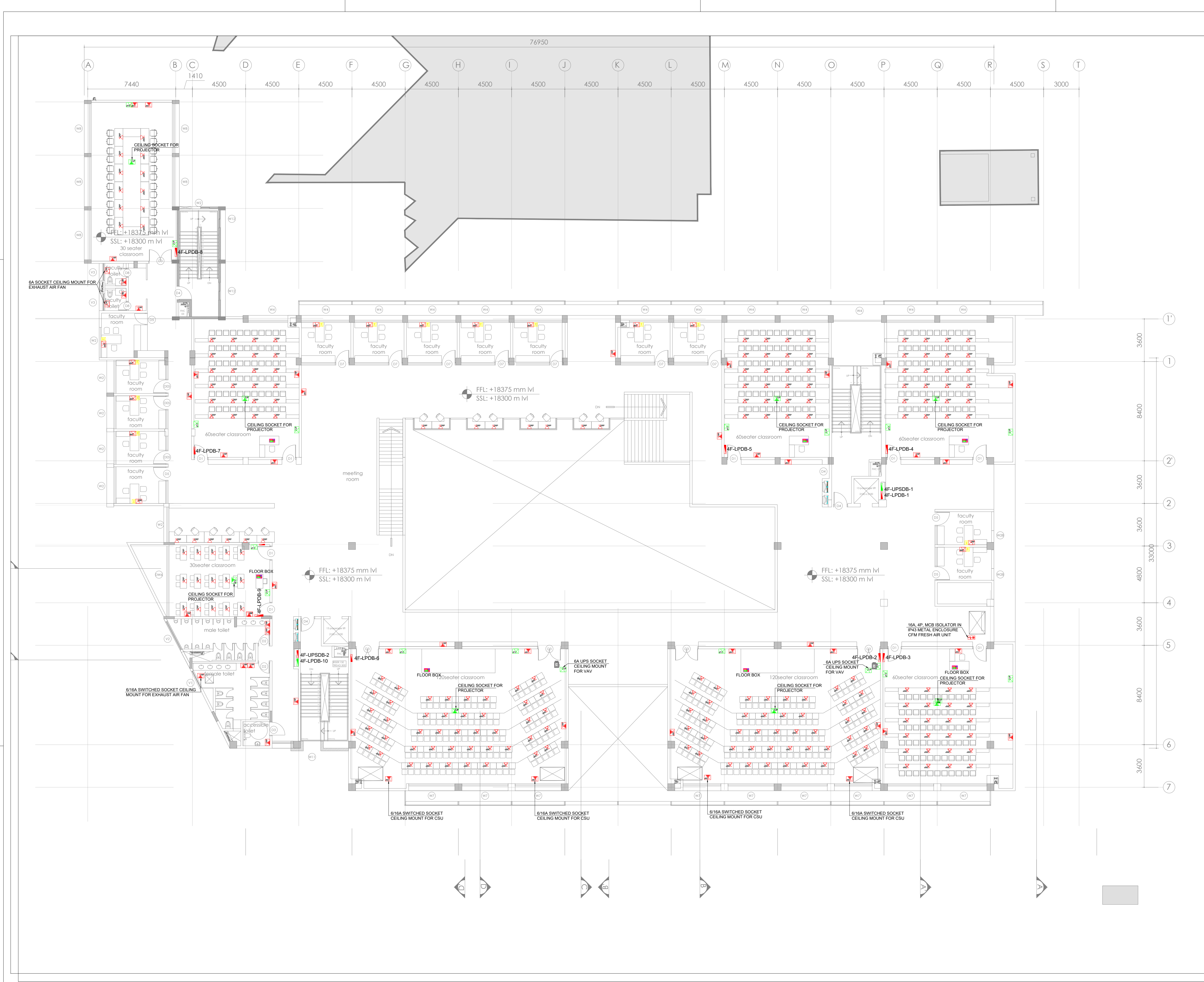
LEAD CONSULTANCY & ENGINEERING SERVICES (INDIA) Pvt.Ltd.
No.272/ 1st FLOOR, 80 FEET ROAD, HOORAHALLI STAGE, BENGALURU-560038, KARNATAKA.
Phone: +91 80 42980111, Web: lcsindia.org
India: Bengaluru | Mumbai | Pune | Gurgaon | Chennai | Hyderabad | Kolkata

DRAWING TITLE			
3F POWER & CABLE TRAY LAYOUT			
DRAWN BY	HMD	DRAWING NUMBER	LCES-NLS-E-205
CHECKED	SSK	SHEET SIZE	A1
APPROVED	PD	REV - R0	DATE 11.02.2025

DRAWING ISSUED FOR

TENDER

THIS DRAWING IS SOLE PROPERTY OF **LEAD CONSULTANCY**
USE OF THIS DRAWING FOR ANY PURPOSE OTHER THAN THAT MENTIONED TO BE DONE ONLY AFTER THEIR PRIOR APPROVAL.



- GENERAL NOTES:**
1. THIS DRAWING SHALL BE READ IN CONJUNCTION WITH ALL RELEVANT ARCHITECTURAL, STRUCTURAL AND OTHER SERVICES DRAWINGS.
 2. ANY DISCREPANCY NOTICED SHALL BE BROUGHT TO THE ATTENTION OF THE CONSULTANTS AND RESOLVED PRIOR TO PROCUREMENT / EXECUTION OF WORKS.
 3. ALL DIMENSIONS ARE IN MILLIMETERS AND ALL LEVELS ARE IN METERS UNLESS OTHERWISE INDICATED.
 4. FOLLOW WRITTEN DIMENSIONS ONLY, DO NOT SCALE THE DRAWING.

SL. NO.	RAW POWER SOCKET SYMBOLS DESCRIPTION	SYMBOL
1	1 NO OF 16A 3PIN SWITCHED SOCKET CONTROLLED BY 1 NOS OF 16A SWITCH (WITHOUT BOX ON FURNITURE)	2P
2	1 NO OF 16A 3PIN SWITCHED SOCKET CONTROLLED BY 1 NOS OF 16A SWITCH (WITHOUT BOX ON FURNITURE)	2P
3	1 NO OF 16A 3PIN SWITCHED SOCKET CONTROLLED BY 1 NOS OF 16A SWITCH (WITH BOX)	2P
4	1 NO OF 16A 3PIN SWITCHED SOCKET CONTROLLED BY 1 NOS OF 16A SWITCH (WITH BOX)	2P
5	1 NO OF 16A 3PIN SWITCHED SOCKET CONTROLLED BY 1 NOS OF 16A SWITCH (WITH BOX)	2P
6	1 NO OF 16A 3PIN SWITCHED SOCKET CONTROLLED BY 1 NOS OF 16A SWITCH (WITH BOX)	2P
7	TELEPHONE	2P
8	DATA POINT	2P
9	2 SET OF 6/16A INTEL SOCKET CONTROLLED BY OF 16A SWITCH IN 2 ROWS ON RAW POWER OTHER ON UPS + 2 DATA PORTS WITH HDMI PROVISION	2P
10	1 NO OF 6/16A 3PIN SWITCHED SOCKET CONTROLLED BY 1 NOS OF 20A SWITCH + 2 DATA/USB+HDMI PORTS (UPS NETBOX TYPE)	2P
11	2P MCB IN IP-40 POLY CARBONATE ENCLOSURE	2P
12	4P MCB IN IP-40 POLY CARBONATE ENCLOSURE	2P
13	4P MCB IN IP-55 MS ENCLOSURE	2P

SL. NO.	UPS POWER SOCKET SYMBOLS DESCRIPTION	SYMBOL
1	1 NO OF 6/16A 3PIN SWITCHED SOCKET CONTROLLED BY 1 NOS OF 20A SWITCH (WITHOUT BOX ON FURNITURE)	2P
2	1 NO OF 6A 3PIN SWITCHED SOCKET CONTROLLED BY 1 NOS OF 16A SWITCH (WITH BOX)	2P
3	2 NO OF 6A 3PIN SWITCHED SOCKET CONTROLLED BY 1 NOS OF 16A SWITCH (WITH BOX)	2P
4	1 NO OF 6/16A 3PIN SWITCHED SOCKET CONTROLLED BY 1 NOS OF 20A SWITCH (WITH BOX)	2P

SYMBOL	DESCRIPTION
150mm x 50mm (H) PERFORATED TYPE CABLE TRAY	
100mm x 50mm (H) PERFORATED TYPE CABLE TRAY	
150mm x 50mm (H) PERFORATED TYPE CABLE TRAY	
150mm x 50mm (H) LADDER TYPE CABLE TRAY	
300mm x 50mm (H) LADDER TYPE CABLE TRAY	
400mm (W) x 50mm (H) LADDER TYPE CABLE TRAY	
600mm (W) x 50mm (H) LADDER TYPE CABLE TRAY	
800mm (W) x 50mm (H) PERFORATED TYPE CABLE TRAY	
750mm (W) x 75mm (H) LADDER TYPE CABLE TRAY	
100mm (W) x 75mm (H) LADDER TYPE CABLE TRAY	

REV. NO.	REVISION DESCRIPTION	DATE
R0	ISSUED FOR TENDER	11.02.2025
R1		
R2		
R3		
R4		
R5		
R6		

PROJECT

JSW ACADEMIC BLOCK - NLSIU
NEW ACADEMIC BLOCK Gnanabharathi Main Rd, Teachers Colony, Naagarabhaavi, Bengaluru, Karnataka 560072

CLIENT

NATIONAL LAW SCHOOL OF INDIA UNIVERSITY
Gnanabharathi Main Rd, Teachers Colony, Naagarabhaavi, Bengaluru, Karnataka 560072

ARCHITECT

HUNDREDHANDS
7/2, Madras Bank Road, Shanthala Nagar, Ashok Nagar, Bengaluru, Karnataka 560001

MEPF AND IBMS CONSULTANTS

LEAD CONSULTANCY & ENGINEERING SERVICES (INDIA) Pvt.Ltd.
No.27/2, 1st FLOOR, 80 FEET ROAD, HOSUR NAGAR B STAGE, BENGALURU-560038, KARNATAKA.
Phone: +91 80 42980111, Web: lcsindia.org
India: Bengaluru | Mumbai | Pune | Gurgaon | Chennai | Hyderabad | Kolkata

DRAWING TITLE			
4F POWER & CABLE TRAY LAYOUT			
DRAWN BY	HMD	DRAWING NUMBER	LCES-NLS-E-206
CHECKED	SSK	SCALE	1:150
APPROVED	PD	SHEET SIZE	A1
		DATE	11.02.2025

DRAWING ISSUED FOR

TENDER

THIS DRAWING IS SOLE PROPERTY OF **LEAD CONSULTANCY**
USE OF THIS DRAWING FOR ANY PURPOSE OTHER THAN THAT MENTIONED TO BE DONE ONLY AFTER THEIR PRIOR APPROVAL.

GENERAL NOTES:

- THIS DRAWING SHALL BE READ IN CONJUNCTION WITH ALL RELEVANT ARCHITECTURAL, STRUCTURAL AND OTHER SERVICES DRAWINGS.
- ANY DISCREPANCY NOTICED SHALL BE BROUGHT TO THE ATTENTION OF THE CONSULTANTS AND RESOLVED PRIOR TO PROCUREMENT / EXECUTION OF WORKS.
- ALL DIMENSIONS ARE IN MILLIMETERS AND ALL LEVELS ARE IN METERS UNLESS OTHERWISE INDICATED.
- FOLLOW WRITTEN DIMENSIONS ONLY, DO NOT SCALE THE DRAWING.

SL. NO.	RAW POWER SOCKET SYMBOLS DESCRIPTION	SYMBOL
1	1 NO OF 8A 3PIN SWITCHED SOCKET CONTROLLED BY 1 NOS OF 10A SWITCH (WITHOUT BOX ON FURNITURE)	2P
2	1 NO OF 8A 3PIN SWITCHED SOCKET CONTROLLED BY 1 NOS OF 10A SWITCH (WITHOUT BOX ON FURNITURE)	2P
3	1 NO OF 8A 3PIN SWITCHED SOCKET CONTROLLED BY 1 NOS OF 10A SWITCH (WITHOUT BOX ON FURNITURE)	2P
4	1 NO OF 8A 3PIN SWITCHED SOCKET CONTROLLED BY 1 NOS OF 10A SWITCH (WITH BOX)	2P
5	1 NO OF 8A 3PIN SWITCHED SOCKET CONTROLLED BY 1 NOS OF 10A SWITCH (WITH BOX)	2P
6	1 NO OF 8A 3PIN SWITCHED SOCKET CONTROLLED BY 1 NOS OF 10A SWITCH (WITH BOX)	2P
7	TELEPHONE	TEL
8	DATA POINT	DP
9	2 SET OF 8/16A INTEL SOCKET CONTROLLED BY OF 10A SWITCH IN 2 ROWS ON RAW POWER OTHER ON UPS + 2 DATA PORTS WITH HDMI PROVISION	2P
10	1 NO OF 8/16A 3PIN SWITCHED SOCKET CONTROLLED BY 1 NOS OF 20A SWITCH + 2 DATA PORTS (UPS NETWORK TYPE)	2P
11	3P MCB IN IP-65 POLY CARBONATE ENCLOSURE	3P
12	4P MCB IN IP-65 POLY CARBONATE ENCLOSURE	4P
13	4P MCB IN IP-65 MS ENCLOSURE	4P

SL. NO.	UPS POWER SOCKET SYMBOLS DESCRIPTION	SYMBOL
1	1 NO OF 8/16A 3PIN SWITCHED SOCKET CONTROLLED BY 1 NOS OF 20A SWITCH (WITHOUT BOX ON FURNITURE)	2P
2	1 NO OF 6A 3PIN SWITCHED SOCKET CONTROLLED BY 1 NOS OF 10A SWITCH (WITH BOX)	2P
3	2 NO OF 6A 3PIN SWITCHED SOCKET CONTROLLED BY 1 NOS OF 10A SWITCH (WITH BOX)	2P
4	1 NO OF 8/16A 3PIN SWITCHED SOCKET CONTROLLED BY 1 NOS OF 20A SWITCH (WITH BOX)	2P

SYMBOL	DESCRIPTION
1	50(W) x 50mm(H) PERFORATED TYPE CABLE TRAY
2	100(W) x 50mm(H) PERFORATED TYPE CABLE TRAY
3	150(W) x 50mm(H) PERFORATED TYPE CABLE TRAY
4	150(W) x 50mm(H) LADDER TYPE CABLE TRAY
5	300(W) x 50mm(H) LADDER TYPE CABLE TRAY
6	450mm (W) x 50mm (H) LADDER TYPE CABLE TRAY
7	600mm (W) x 50mm (H) LADDER TYPE CABLE TRAY
8	600mm (W) x 50mm (H) PERFORATED TYPE CABLE TRAY
9	750mm (W) x 75mm (H) LADDER TYPE CABLE TRAY
10	1000mm (W) x 75mm (H) LADDER TYPE CABLE TRAY

REV. NO.	REVISION DESCRIPTION	DATE
R0	ISSUED FOR TENDER	11.02.2025
R1		
R2		
R3		
R4		
R5		
R6		

PROJECT

JSW ACADEMIC BLOCK - NLSIU
NEW ACADEMIC BLOCK Gnan Bharathi Main Rd, Teachers Colony, Naagarabhaavi, Bengaluru, Karnataka 560072

CLIENT

NATIONAL LAW SCHOOL OF INDIA UNIVERSITY
Gnan Bharathi Main Rd, Teachers Colony, Naagarabhaavi, Bengaluru, Karnataka 560072

ARCHITECT

HUNDREDHANDS
7/2, Madras Bank Road, Shanthala Nagar, Ashok Nagar, Bengaluru, Karnataka 560001

MEPF AND IBMS CONSULTANTS

LEAD CONSULTANCY & ENGINEERING SERVICES (INDIA) Pvt.Ltd.
No.272/ 1st FLOOR, 80 FEET ROAD, HOORANAGAR 8 STAGE, BENGALURU-560038, KARNATAKA.
Phone: +91 80 42980111, Web: lcsindia.org
India: Bengaluru | Mumbai | Pune | Gurgaon | Chennai | Hyderabad | Kolkata

DRAWING TITLE

TF POWER & CABLE TRAY LAYOUT

DRAWN BY	HMD	DRAWING NUMBER	SCALE	1:150
CHECKED	SSK	LCES-NLS-E-207	SHEET SIZE	A1
APPROVED	PD	REV - R0	DATE	11.02.2025

DRAWING ISSUED FOR

TENDER

THIS DRAWING IS SOLE PROPERTY OF LEAD CONSULTANCY
USE OF THIS DRAWING FOR ANY PURPOSE OTHER THAN THAT MENTIONED TO BE DONE ONLY AFTER THEIR PRIOR APPROVAL.